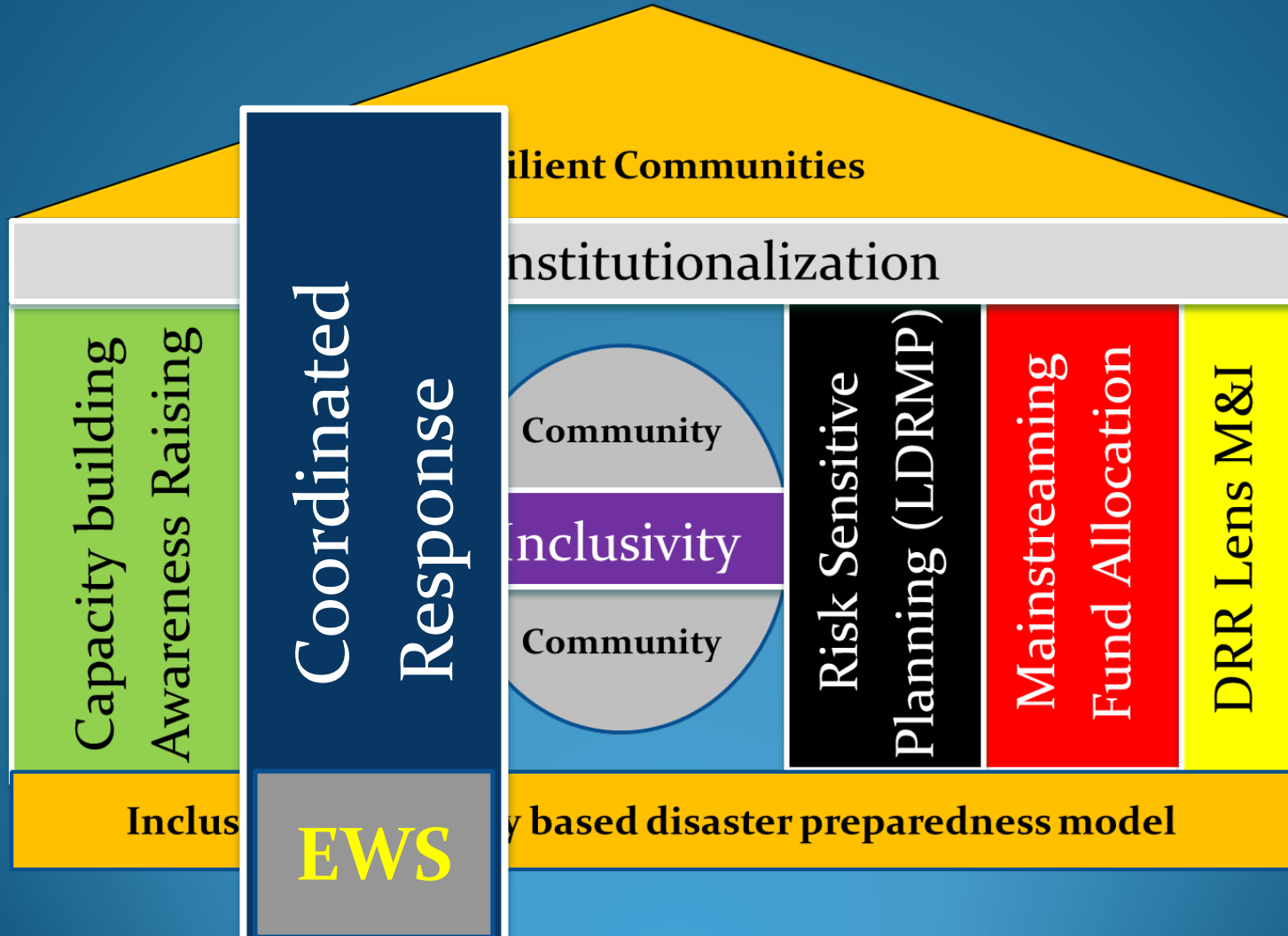


Coordinated Response: Comprehensive Early Warning System



Overall Objective

- Decrease Human Casualties with respect to previous cycles/ years
- Decrease property loss with respect to previous cycles/years

Specific Objective

- Decreased lead time to response with respect to previous years/ cycles.
- Increased time for response mobilization before disasters strike
- Increased Coordination & Mobilization of Human and Non-human emergency resources, including neighbouring Communities/ VDCs/ Districts, with respect to previous years
- Increased real-time information to improve decision making process during the disaster

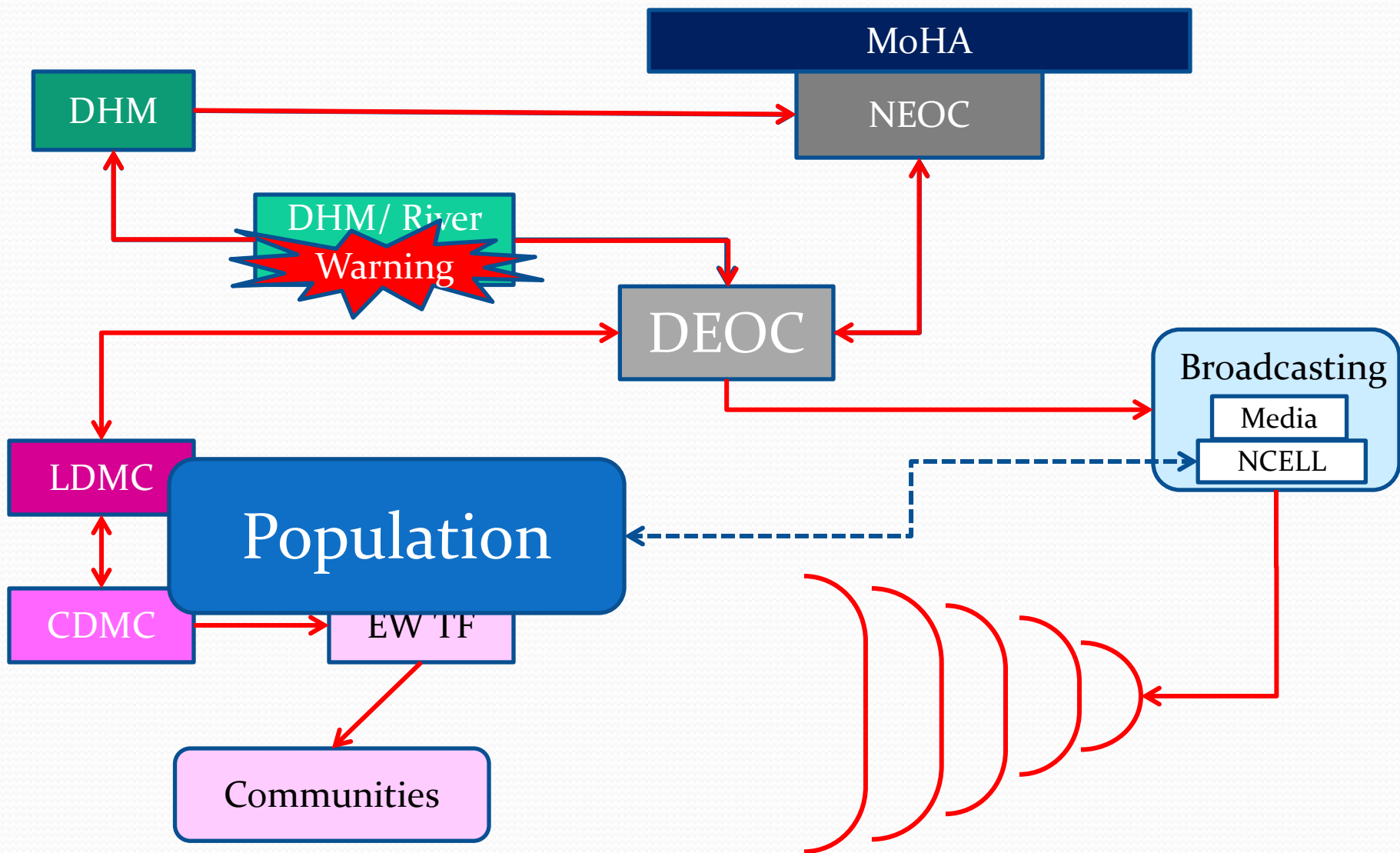
Types of information

- Water level / Rainfall Information (MH)
 - Detail information
- Warning/Danger Information (WD)
 - Warning when threshold is passed
- Response – Coordination (CO)
 - Coordination messages to guarantee effective and efficient mobilization of resources
- Real Time Information – Assessment (RA)
 - Regular update on situation of affected communities on real time for informed decision making.

Components and Stakeholders

- MoHA
 - Response and Coordination
 - Rapid Assessment
 - Communication and Dissemination of Information
- MoFALD
 - Preparedness and Capacity Building
 - Community support to response and assessment
- DHM
 - Monitoring and Observation of Meteorological Information
 - Communication and Dissemination
- Media and Private Sector
 - Communication and Dissemination

Monitoring and Dissemination

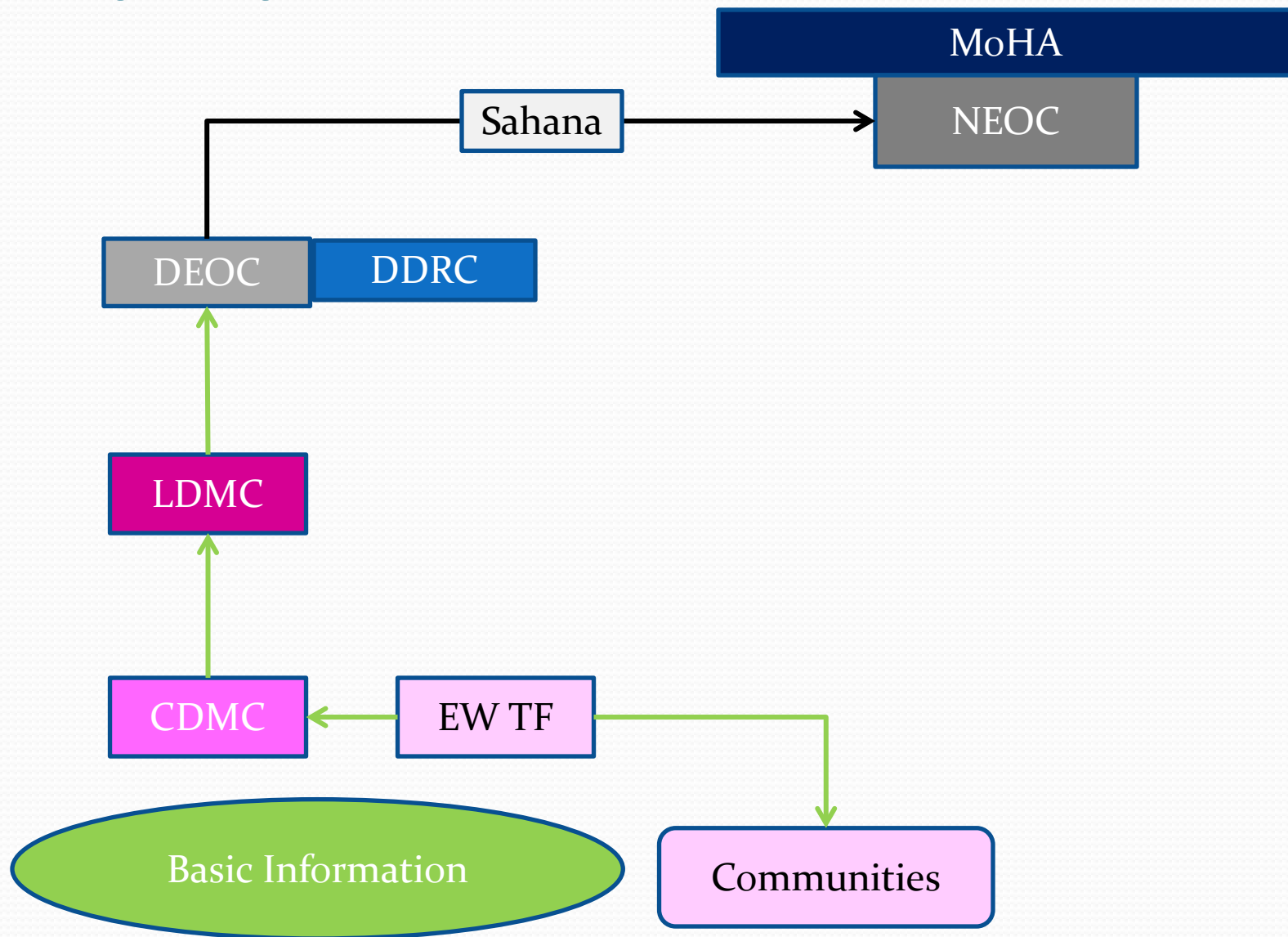


Achievements from this component

- Multiple communication paths linking from Community to national Level
- Supporting a comprehensive response, increasing the mobilization of Human and Non-Human Resources

Increase Time for Response before Disaster Strikes

Pre-deployment Assessment

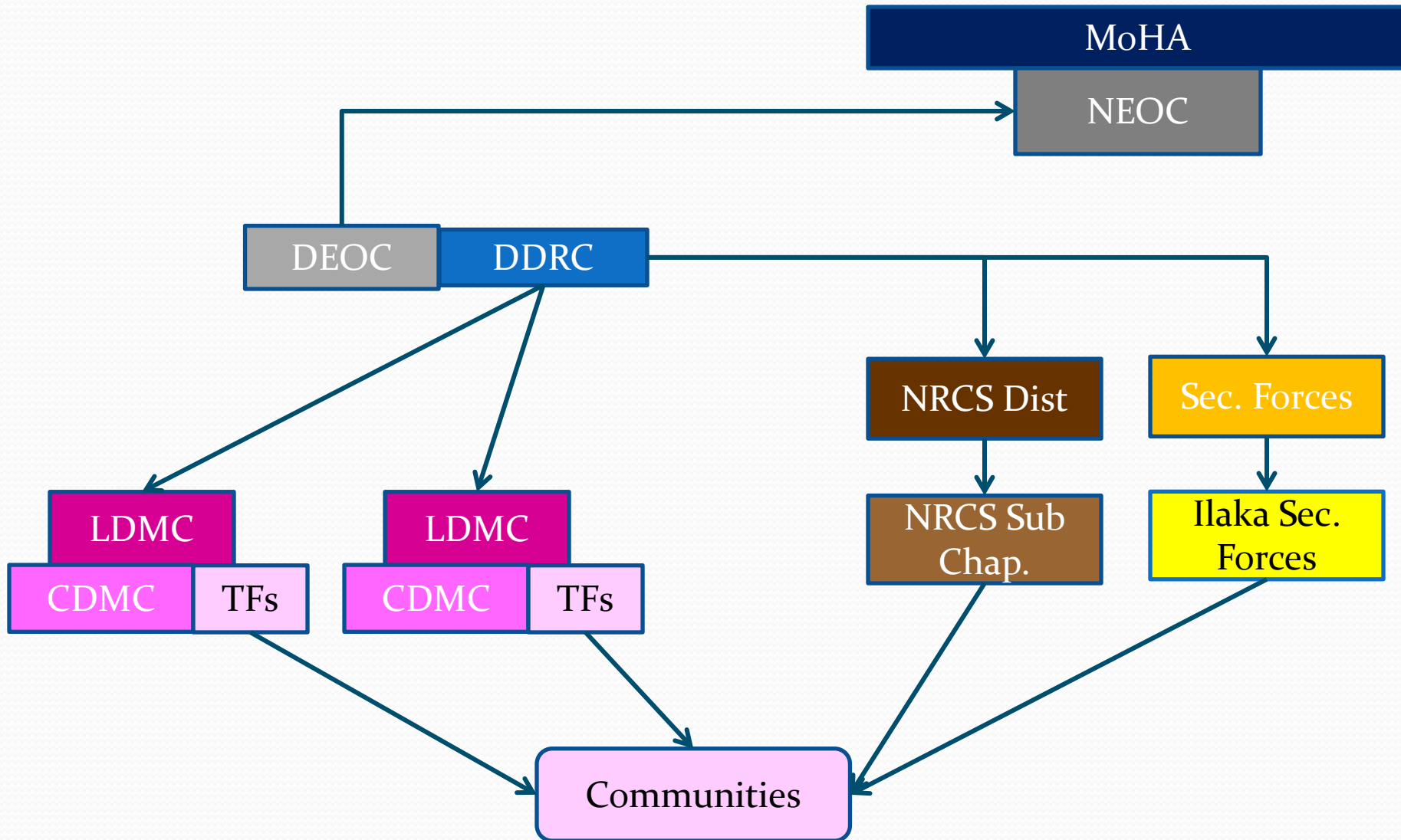


Achievements from this component

- Basic information immediately shared for a more effective initial Response:
 - Number of Population affected
 - Casualties
 - Locations
 - Etc.

Reduced Time for initial Deployment
Deployment tailored to real needs

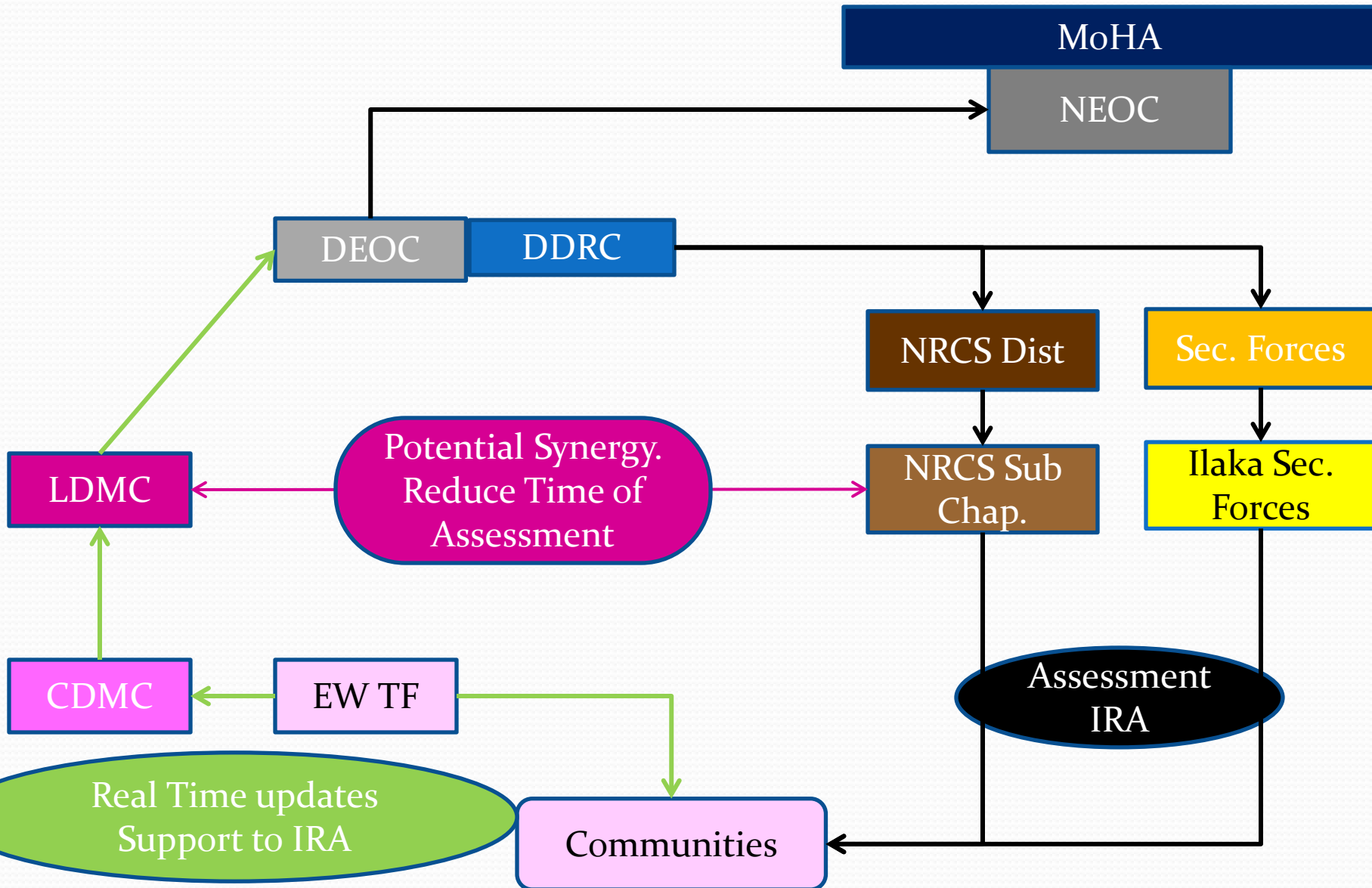
Coordination for Response



Achievements from this component

Increase Human and Non-Human Emergency Resources mobilised in a coordinate manner for the response (Including Horizontal Support)

Post-Deployment Assessment

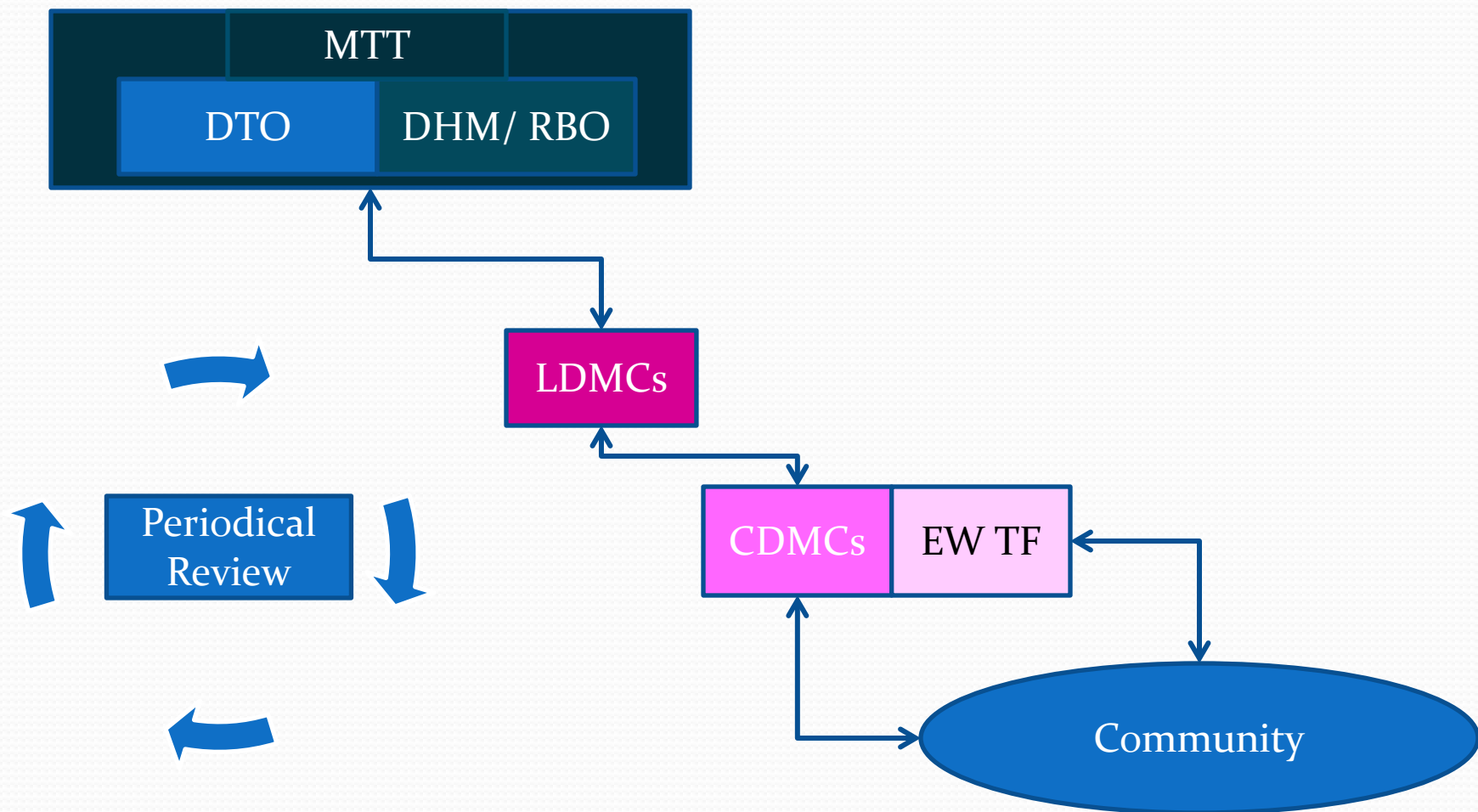


Achievements from this component

- Real Time Information shared for continuous support to the decision making level
- Complementarity and efficiency during rapid assessments

Adaptative Response during all Disaster Cycle

Preparedness: Establishment Risk Knowledge Management

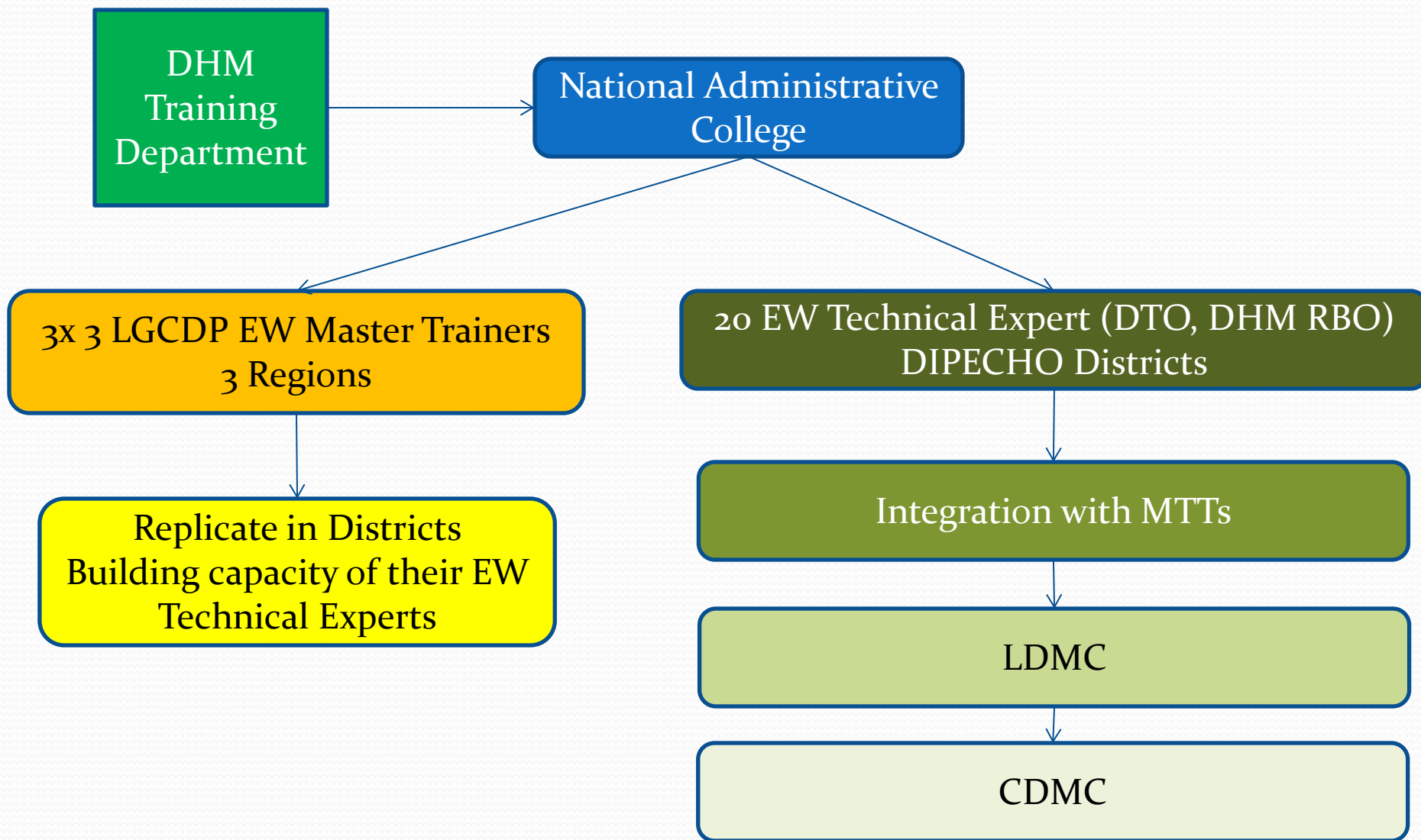


Achievements from this component

- Specific knowledge of communities shared and utilised:
 - Threshold Levels
 - Inundation areas

Indigenous Knowledge taken into account for future Response

Preparedness: Capacity Building

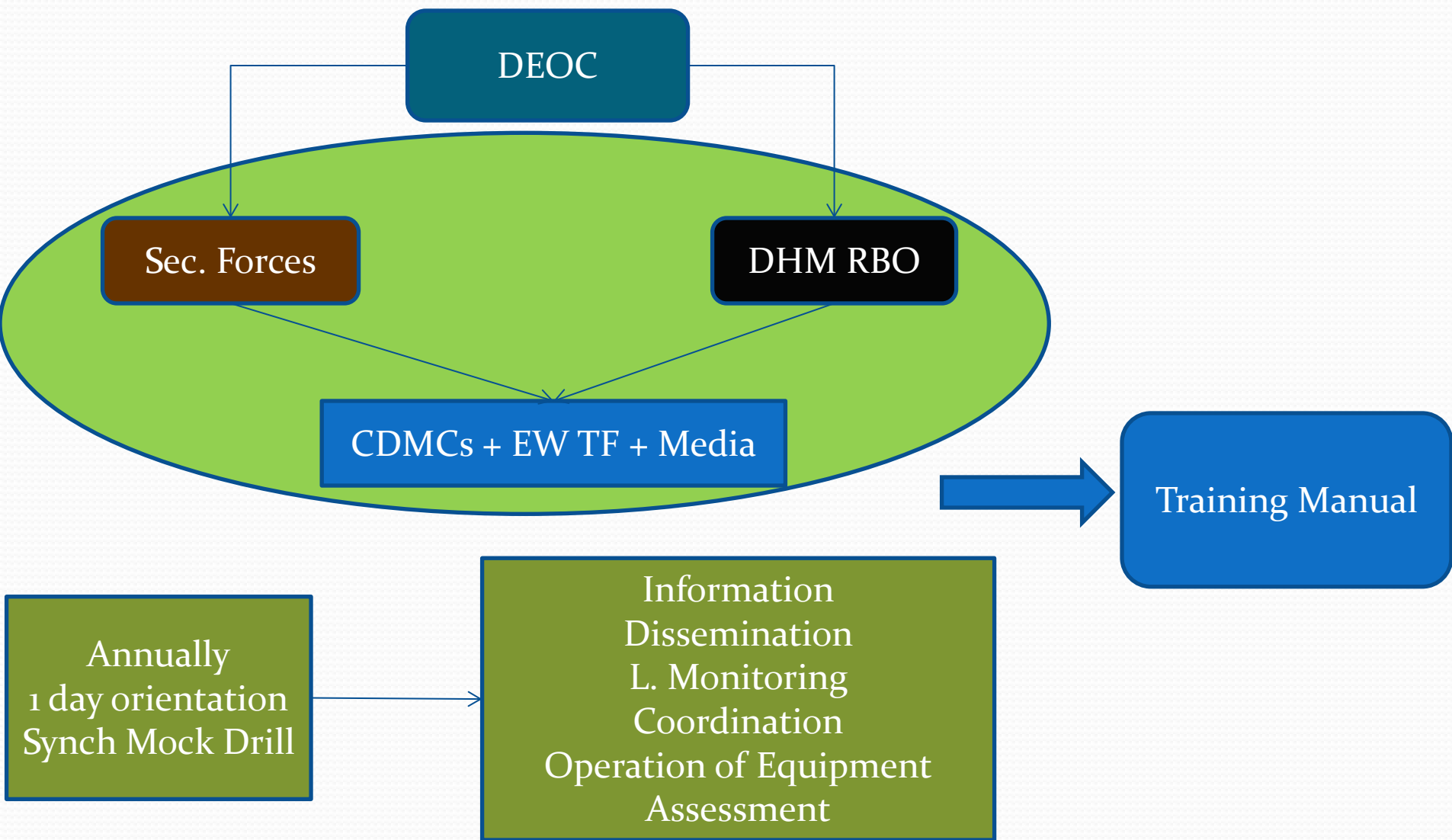


Achievements from this component

- Institutionalized Capacity Building process

Capacity Building for Replication

Preparedness: Capacity Building



Achievements from this component

- Cost-effective capacity building to community emergency teams.
- Reinforced Mock Drills
- Awareness Raising

Capacity Building for Integrated Response

Next Steps - EW Framework workshop

- EW Framework workshop
 - Presentation of draft for discussion
 - Discussion on:
 - Linkages
 - Roles
 - Capacity Building process – Identification of Master Trainers
 - Main Stakeholders:
 - MoHA
 - MoFALD
 - DHM/ MoSTE

Next Steps - EW Mechanism workshop

- EW Mechanism workshop
 - Second level Stakeholders
 - MoIC
 - Participants:
 - NRCS
 - NRRC
 - Security Forces
 - DEOC

Next Steps – Capacity Building

- Master Trainers Training
- DEOC trainings and production of Training manual
- Discussion with NCELL



Humanitarian Aid
and Civil Protection

Thank you!